

INTERIOR WOOD TRENDS

2019



INSPIRED BY *Rubio*[®] MONOCOAT

*“If you love something,
it will work.
That’s the only real rule.”*

B. Williams

WOOD has been playing an important role in our homes for ages. Originally primarily for practical reasons, but over time, also more and more for aesthetic reasons. Today, the use of wood is hot again! Wood frame construction is on the rise, many façades feature wooden cladding and also in our interiors, wood is once again playing a starring role.

At Rubio Monocoat we breathe wood! The primary aim of our products is always to protect the wood and increase its service life. But if we can make the wood shine in all its facets, we will certainly never forego the opportunity. Traditional and classic, minimalistic and dark, playful and colourful... As the "King of Colours" we see it as a challenge to find solutions for every atmosphere. As long as it includes keeping the natural look and feel of the wood!

The last two years, we each time launched our Rubio Monocoat Colour Trends for this, next to our 40 standard colours. Collections with fresh new colours, inspired by the living and colour trends of that year.

In 2019, we're going for something different! We have collected the trends in the use of wood in interiors for the coming year into our very first magazine. The idea is to inspire all wood-loving people, with tips on how Rubio Monocoat products can help you achieve the result you have in mind.

So go ahead, turn this page and get inspired by the **interior wood trends for 2019**. But whatever you do, stay true to your own style!

- Griet Creytens, Marketing team
Rubio Monocoat Headoffice

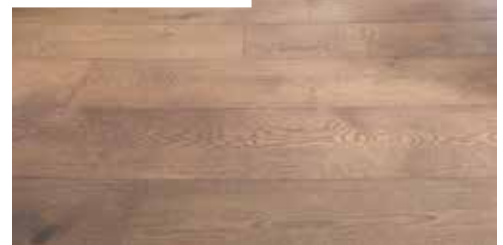
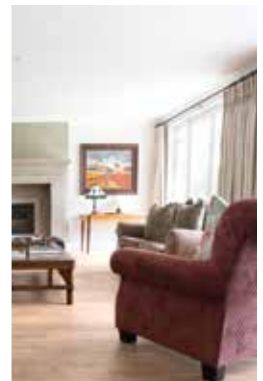
Table of Contents



04 PASSION FOR PATTERNS

- 06 Herringbone parquet
- 08 Chevron parquet
- 10 Versailles parquet
- 12 Geometric patterns
- 14 Interview with Jamie Beckwith

- 16 THE NEW AUTHENTIC
- 16 Various types of wood treatment
- 18 Finishing products
- 22 In the spotlight: Pre-Aging





32

HINT OF COLOUR

32

Hint of colour on your floor

32

Hint of colour on your wall

32

Hint of colour on your furniture & accessories

38

In the spotlight: King of Colours tool



22

STATEMENT WOOD

24

Statement parquet floors

28

Statement walls, stairs, etc.

30

Interview with Pieterjan Van Maele

COLOFON

This magazine was realized
by the marketing department
of Rubio Monocoat headoffice.

Editorial account:

Griet Creytens and Muriël Staelens

Editorial support:

Febe Laridon, Jamie Beckwith
and Pieterjan Van Maele

Design & Styling:

Anthony Nys and Yasmine Tant

Photography:

all reserved to Rubio Monocoat,
cover ©PVM Architects

*Rubio Monocoat is not responsible for any changes
and colour differences to the products, shown colours,
services or images mentioned in this magazine.
Acquisition, even in part, of the illustrations, creations
and published articles from this magazine is prohibited
without the permission of the responsible publisher.*



Passion

FOR PATTERNS

*Are floor patterns still relevant today?
They certainly are! Led by the popular
herringbone, patterns are completely
back in style!*



© 2018 Jamie Beckwith



There are hundreds of laying patterns, but the herringbone, Chevron parquet, the Versailles pattern and the use of playful geometric motifs are definitely the most popular ones today. Where in the past these patterns were very exclusive and mostly used in very stylish mansions or castles, today they fit into any house, with both classic and contemporary interiors.

The use of a pattern can give a contemporary space an elegant, classical twist. And conversely, a unique pattern can also lead to a very trendy look in a classic interior. A pattern affects not only the entire atmosphere of the room, it also unconsciously has a big impact on how big the room looks. A pattern can really have dazzling results!

THESE PATTERNS WILL DEFINITELY RAISE YOUR FLOOR TO A HIGHER LEVEL:



HERRINGBONE PARQUET

The classic laying pattern, currently more popular than ever!



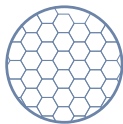
CHEVRON PARQUET

Herringbone's brother, but just a little different.



VERSAILLES PARQUET

The most luxurious style pattern, with roots in the palaces of France.



GEOMETRIC PATTERNS

Great originality with playful geometric shapes.

AND WHAT ABOUT THE TRUSTY OLD PLANK FLOOR?!

The laying pattern that is used most frequently is probably still the plank floor. But opting for this traditional pattern does not have to mean sacrificing creativity. Read all about it further in this magazine.



HERRINGBONE

- › Classic laying pattern
- › Equal, rectangular boards form the pattern of a herringbone
- › Classic and timeless look




RMC Oil Plus 2C
NATURAL



"Architecture should
speak of its time and place,
but yearn for timelessness."

- Frank Gehry



Due to its classic and timeless look, this ancient pattern immediately catches everyone's attention.

HERRINGBONE

The herringbone may be the most classic of all the laying patterns, but currently it is trendier than ever.

A herringbone parquet is made with rectangular boards of the same length. By placing them neatly next to each other at an angle of 90°, with the crosscut side perpendicular to the long side of the next board, they form a pattern that is reminiscent of a herringbone, which is what the pattern is named after.

Due to its classic and timeless look, this ancient pattern immediately catches everyone's attention. In addition, it looks beautiful in any room of a house, from the living room to the bathroom and the kitchen.

A mix of:



RMC Oil Plus 2C
SMOKE



RMC Oil Plus 2C
WHITE

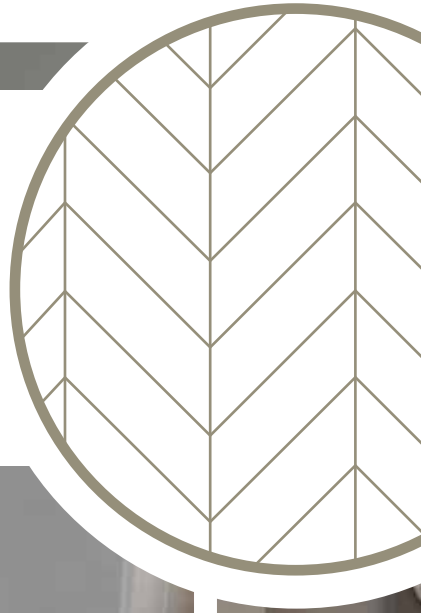
HERRINGBONE parquet



RMC Oil Plus 2C
BLACK

CHEVRON

- › Herringbone's brother
- › Sleek patterns of equal parallelogram boards
- › Luxury from the past with a fresh twist



CHEVRON

parquet

If you opt for a Chevron parquet, you are going for a hint of the luxury of the past with a fresh twist!



© 2018 Shutterstock



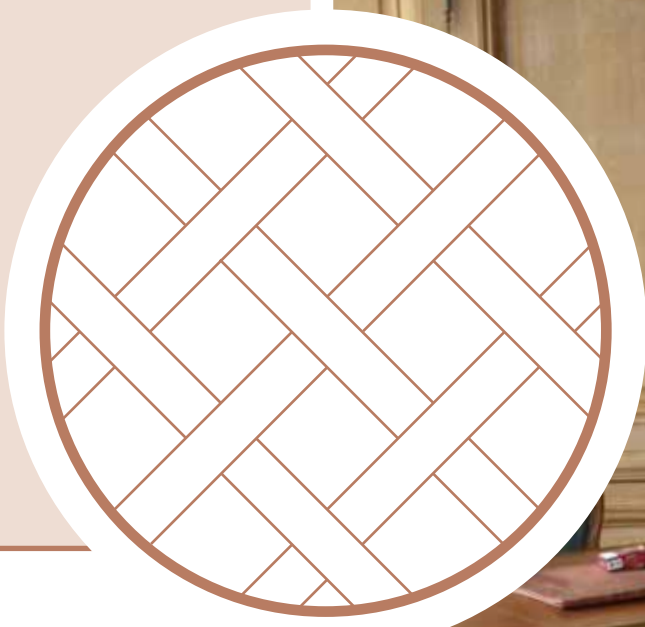
RMC Oil Plus 2C
BLACK

CHEVRON

Because they look similar, the Chevron pattern is sometimes called the brother of the herringbone. But these laying patterns are not exactly the same! Just like the herringbone, the Chevron is made of small boards of equal length, but here they have the shape of a parallelogram. The short sides of the boards are placed against each other and hereby form a line. The design of the Chevron pattern looks a bit sleeker than the herringbone. If you opt for a Chevron parquet, you are going for a hint of the luxury of the past with a fresh twist!

VERSAILLES

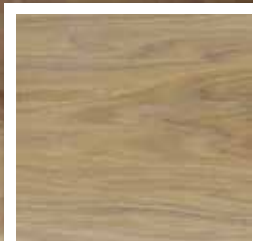
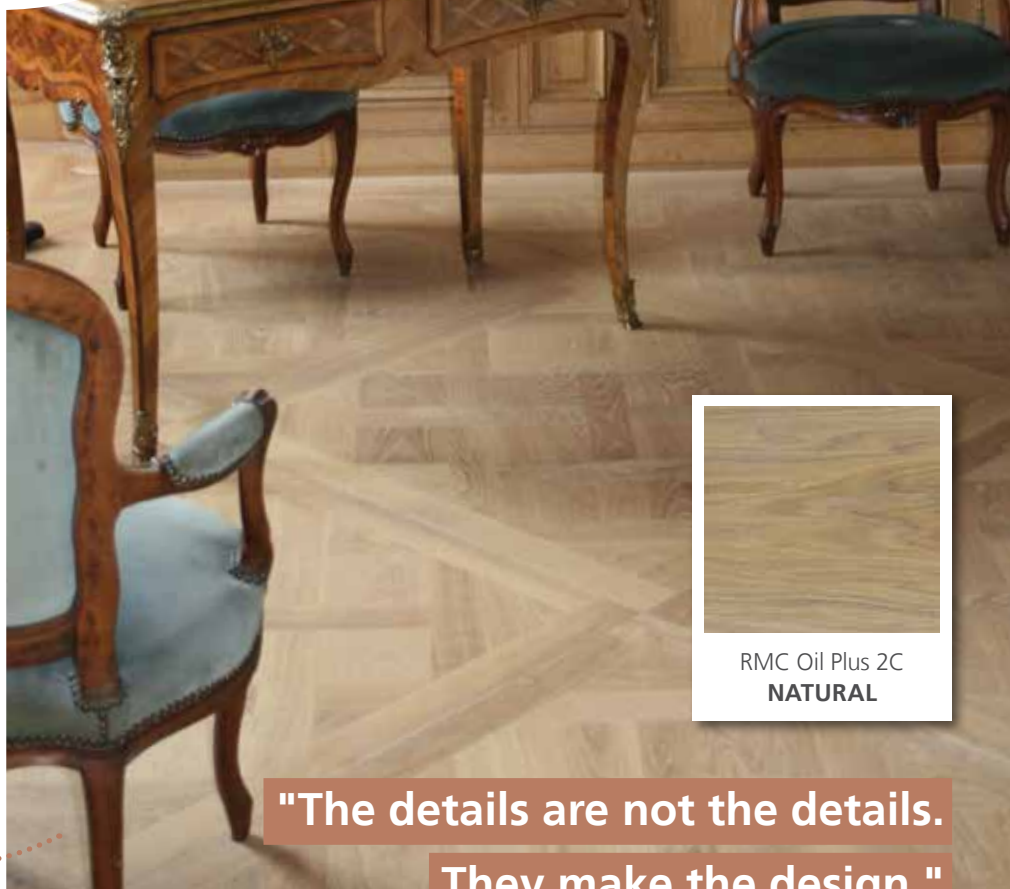
parquet



VERSAILLES

- › Roots in the palaces of France
- › Consists of square panels with diagonal basket-weave patterns inside a square
- › The most luxurious style pattern

The original Versailles pattern consists of a square panel with a diagonal basket-weave pattern inside it.



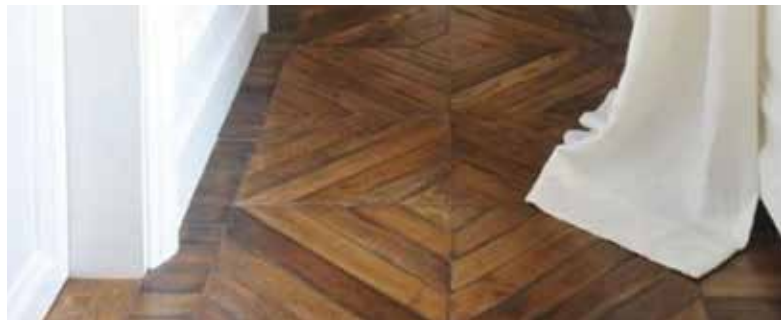
RMC Oil Plus 2C
NATURAL

**"The details are not the details.
They make the design."**

Each and every single
Versailles pattern
is a true eye-catcher!



Walnut wood with
RMC Oil Plus 2C **PURE**



VERSAILLES

The original Versailles pattern consists of a square panel with a diagonal basket-weave pattern inside it. The pattern got its name from the Versailles Palace, where it was first installed in the majestic mirror room, the epitome of French grandeur and luxury. This says a lot about the look of this unique pattern. By now there are many classic variants of the Versailles pattern, each with their own geometric pattern inside a square. Each one is a true eye-catcher!

GEOMETRIC

patterns




GEOMETRIC

- › Originality at its best
- › Range of options:
end grain, on-edge parquet, mosaic
- › Trendy vintage with the hexagon pattern!

Why not combine wooden
hexagon tiles with, for example,
vintage porcelain tiles?



© 2016 Alyssa Rosenheck



*Let your creativity flow.
because no geometric
shape is too wild.*

© 2018 Jamie Beckwith

GEOMETRIC

Not a fan of herringbone or Chevron, but you do want something original? Let your creativity flow, because no geometric shape is too wild. Opt for little squares with the use of end grain wood, go for an industrial look with on-edge parquet, or make your own pattern with a mosaic parquet. The little strips that are the basis of this type of parquet enable endless variations.

Another geometric design that has been gaining in popularity is the hexagon pattern. This pattern, which cheered up many kitchens in the beginning of the 20th century, is increasingly finding its way back to current interiors. A parquet consisting of wooden tiles in the shape of hexagons (six sides), gives a room a fresh, playful look with a vintage wink! And if that's not crazy enough: why not combine wooden hexagon tiles with, for example, vintage porcelain tiles. More about this in the section 'statement wood' on page 28.



© 2018 Jamie Beckwith

INTERVIEW WITH

Jamie Beckwith*About Jamie Beckwith*

- › leading trendsetter in the realm of luxury interior design
- › founder and design visionary behind the Jamie Beckwith Collection®
- › established Beckwith Interiors design practice in USA in 2006

The use of patterns in interiors has really made a come-back nowadays. How would you explain this revival? I believe pattern, and specifically repeating pattern is familiar and comforting to people. It adds visual interest while still being soothing to look at. I believe designers and clients are enjoying pattern not only for flooring but also for wall treatments and fabrics to bring depth and texture to their interiors.

Why would we choose a pattern in our interiors? Pattern in flooring is unexpected and custom which gives a person the ability to create a design story from the ground up. Pattern in fabrics and wall treatments gives a layered effect and keeps solid monochrome spaces from being staid or boring.

What does the use of a pattern add to a room? Everything! Pattern is artwork for a space.

Are there things to look out for when using patterns? The use of pattern is personal. Many designers enjoy mixing solids with a bold pattern, while others layer multiple patterns. Some may be more graphic and geometric while some patterns are more organic and fluid. I like the juxtaposition of both graphic and fluid patterns together.

Where do you get your inspiration for the creation of your designs? I like the idea of old classic parquets and mosaics from hundreds of years ago and looking at ways to modernize them. I am inspired by travel, artwork and fashion. They all play an important part of what is trending in design.

What is your favorite pattern? I have many favorites but currently like our newest pat-

tern, **ARROW**. It is modern in style and graphically very strong. Especially when we mix multiple Rubio stains within the pattern. Just by mixing stain with installation layout we can achieve many different patterns with one simple shape.

Why do you often choose Rubio Monocoat for the finishing of your designs? We enjoy the ease of application, with the ability to avoid overlap and smooth finishing. We appreciate the no VOC system which is safe for our employees and finishers. We also appreciate the ease of maintenance for our clients. Mostly we enjoy the multiple color options and ability to create special finishes with the special effects collection.

What are the advantages of our oil in your opinion? The durability mixed with the beautiful color options.

What is your favorite Rubio Monocoat color? We enjoy the Rubio Monocoat Oil Plus 2C Slate Grey and Rubio Monocoat Oil Plus 2C White.



**Pattern is artwork
for a space.**



Rubio Monocoat 2C,
the ideal partner for
all your projects.



40 standard
colours



easy to use,
no overlaps



natural
ingredients

www.rubiomonocoat.com

The new AUTHENTIC

We live in a hectic world full of stimuli, where we are too often aiming for the perfect picture. When we get home, we seek peace, security and warmth. In today's interiors this reflects in the return to natural, authentic materials. And it doesn't all have to be that perfect! The demand for authentic wooden floors with character is huge right now. Today, it is okay for a parquet floor to look somewhat worn. Big knots, small cracks, colour variations, etc. - small details make an authentic floor perfectly imperfect!

Recovering genuine authentic floors from castles, mansions, barns and even railway wagons is currently a real trend. But those who prefer to put their faith in a new parquet floor can also attain a weathered look! Specific types of wood treatment can make new boards look like they have stood the test of time. Creating the warm colours and shades that are so characteristic of aged floors can be done with the correct finishing products.

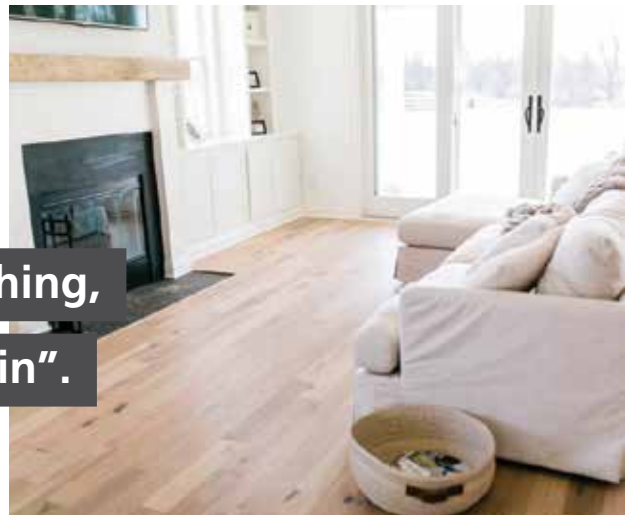
VARIOUS TYPES OF WOOD TREATMENT

When finishing a parquet floor, it is generally sanded beforehand, during the preparation process. Newly installed wooded floors are sanded to make them 100% level. Old floors are sanded to remove the old, sloppy wood finishing and to level the worn areas. The result is a smooth, beautiful, new-looking floor, ready to be finished.

However, if you want something a little more robust, a number of specific treatments offer the option to structure the boards in advance. Every treatment results in its own characteristic texture with which the imperfections, that are so characteristic of authentic floors, can be imitated. Some treatments result in an uneven structure, ideal for an aged look!

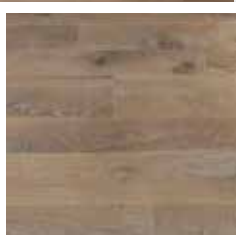
**"There's a crack in everything,
that's how the light gets in".**

- Leonard Cohen



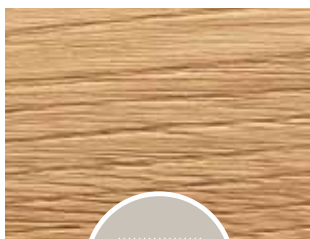


An authentic parquet floor that looks natural and yet is strong and new? Absolutely! Thanks to some very specific wood processes and the right finishing, the most beautiful, aged looks are within reach!

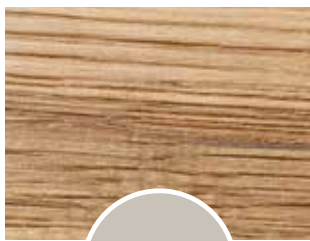


Canadian White Oak
with RMC Oil Plus 2C
WHITE

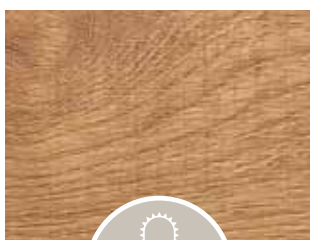
SEVERAL WOOD PROCESSING OPTIONS:

**BRUSHING**

When boards are brushed, the soft wood is absorbed between the harder wood veins with the aid of a steel brush. A subtle structure is created which allows you to feel the wood grains. The result is a floor with a clear grain pattern. You can opt for a rougher or finer finishing according to the type of brush you use.

**HAND SCRAPING**

Scraping the parquet goes back to an old technique where the top layer of the floor is scraped off, with the objective of making the boards smooth and flat. With this treatment, imperfections are purposely added to hide wear and tear. This results in a floor with a little more relief, which contributes to the aged look.

**SAW MARKS**

Saw marks are currently very trendy. They are applied randomly on the top layer of oak wood boards, in the opposite direction of the grain. These saw marks create a play of lines and give the floor a vintage, worn look.

All of these wood treatments can also be combined, according to individual taste.

In our new **King of Colours tool**, you can play with these different treatments and discover what effect they have on the chosen colour. Read more on page 38 or go to www.rubiomonocoatkingofcolours.com and try it out.





FINISHING PRODUCTS

In addition to the minor imperfections that the years bring with them, authentic floors are generally characterized by their warm colours and colour variations. On a new floor, this look can be created by finishing the parquet with a pigmented oil.

Our **Rubio Monocoat Oil** is available in an extensive range of traditional, natural colours that make any atmosphere possible:

- › robustness with the colour Walnut
- › an aged look with the colour Castle Brown
- › a warm glow thanks to the colour Pure
- › etc.

In addition, the oil will bring out the characteristics of the wood even more. The grains, knots and other markings will be emphasized. And at least just as important: your floor will not only look but also actually be authentic and robust. Thanks to the fact that Rubio Monocoat Oil Plus 2C colours and protects the wood in one coat, it is perfectly protected by the oil.

If you want to take it a step further, more nuances may be achieved in the finishing, by using optional pretreatments. In addition to effectively smoking and fuming wood, there are many reactive products that will give an extra smoked or aged look to the wood.

Rubio Monocoat recently added a new pretreatment to this line: the non-reactive **Rubio Monocoat Pre-Aging**. This product enables deep colouring with subtle accents, without the negative aspects its reactive brothers bring. In combination with Rubio Monocoat Oil Plus 2C as final protection, the perfectly aged look is feasible for any project.

RUBIO® MONOCOAT PRE-AGING

NON-REACTIVE PRETREATMENT TO GIVE NEW WOOD AN OLD LOOK

A new floor with an old look. It is a floor trend that is currently very popular. In addition to actually smoking and fuming wood, there are many reactive products that will give the wood a smoked or aged look.



Rubio Monocoat Pre-Aging is a high-quality, **non-reactive** pretreatment, available in 10 standard shades. The colour spectrum ranges from a lighter to a darker smoked look, with colours that can be mixed with each other to the variant the customer wants. There is also a range of aged colours that can be mixed together. This results in a **deep colour with subtle accents**. The hard parts of the wood and the sapwood are also coloured to get the most natural aged look possible.

This non-reactive pretreatment is easy to apply on site **without any overlaps**.

The product is applicable to **virtually all wood types**, because the effect of the product is not dependent on the tannins acid content of the wood. This is unlike reactive stains, which can only be used on wood types containing tannins.



TIP:

Do take into account that the base colour, the grain structure and the porosity of the wood will affect the end result. A wood type with red undertones, for example, will have a different effect than new, pale pine-wood. That is why it is important to apply a sample first.

In combination with Rubio Monocoat Oil Plus 2C as final protection, you get a nearly unlimited spectrum of creative options, partially due to the transparency of this product. In other words, the aging effect is permanent.

Additional unique characteristics:

- › Non-reactive water-based pretreatment
- › Stable colour that is easy to reproduce
- › Excellent stain resistance after treatment with our oil
- › Deep colouring with subtle accents
- › Applicable to virtually all wood types
- › Neutral product
- › Does not affect the quality of the finishing coat
- › Minimal odour
- › Free of transport restrictions
- › Also colours the hard parts of the wood and the sapwood
- › No overlaps

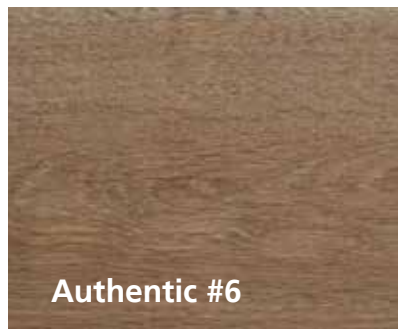
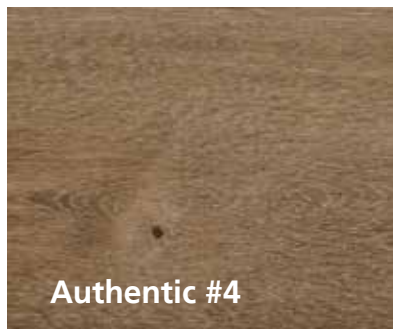
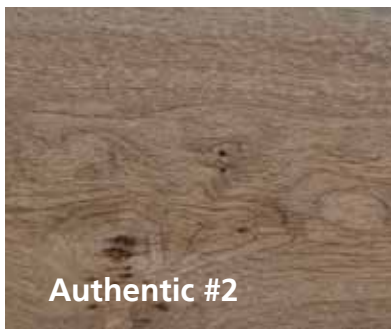
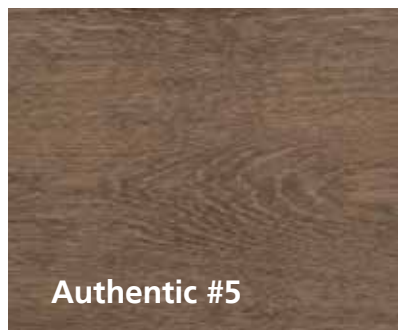


This product is a pretreatment and does not protect the wood. **It has to be combined with one of our Rubio Monocoat finishing products** for maximum protection.

Fumed look

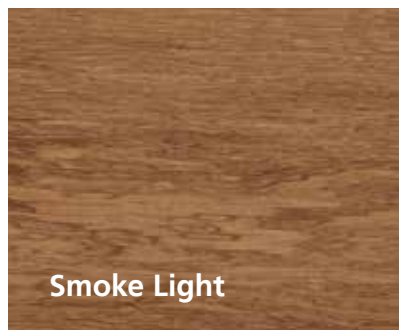
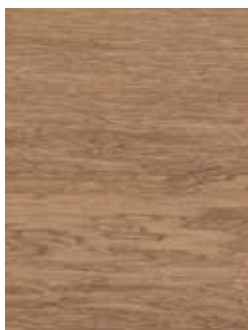
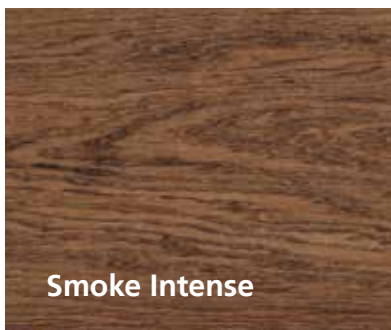


Authentic Amonia look



The colours can be mixed to get the exact pre-aged tone the customer has in mind.

Smoked look



The colours can be mixed to get the exact pre-aged tone the customer has in mind.

Colours shown are on Oak.

The colours shown are for reference only and are not binding.

STATEMENT *wood*

*Do you want to revive an old worn-out room? Do you have a newly decorated room that could use a cheerful touch? Dare to think “**outside the box**” and make a statement with wood!*



An accent wall in a striking colour, a beautifully designed piece of furniture, eye-catching light fixtures; giving our interior a creative boost with a few well-chosen statements is nothing new. The fact that this can also be done with a parquet floor is a trend that has been catching on lately. Whether it is done in a subtle way or very lavishly, parquet floors are increasingly the eye-catchers of the room.



© 2018 Lenzer

Too much of a good thing

Be careful with too many statements. Choose one unique statement and trust that it will be enough. Too many statements don't give the eye a resting point and create chaos.

**"A room should never allow the eye
to settle in one place. It should smile at you
and create fantasy."** - Juan Montoya



© 2018 PVM Architects



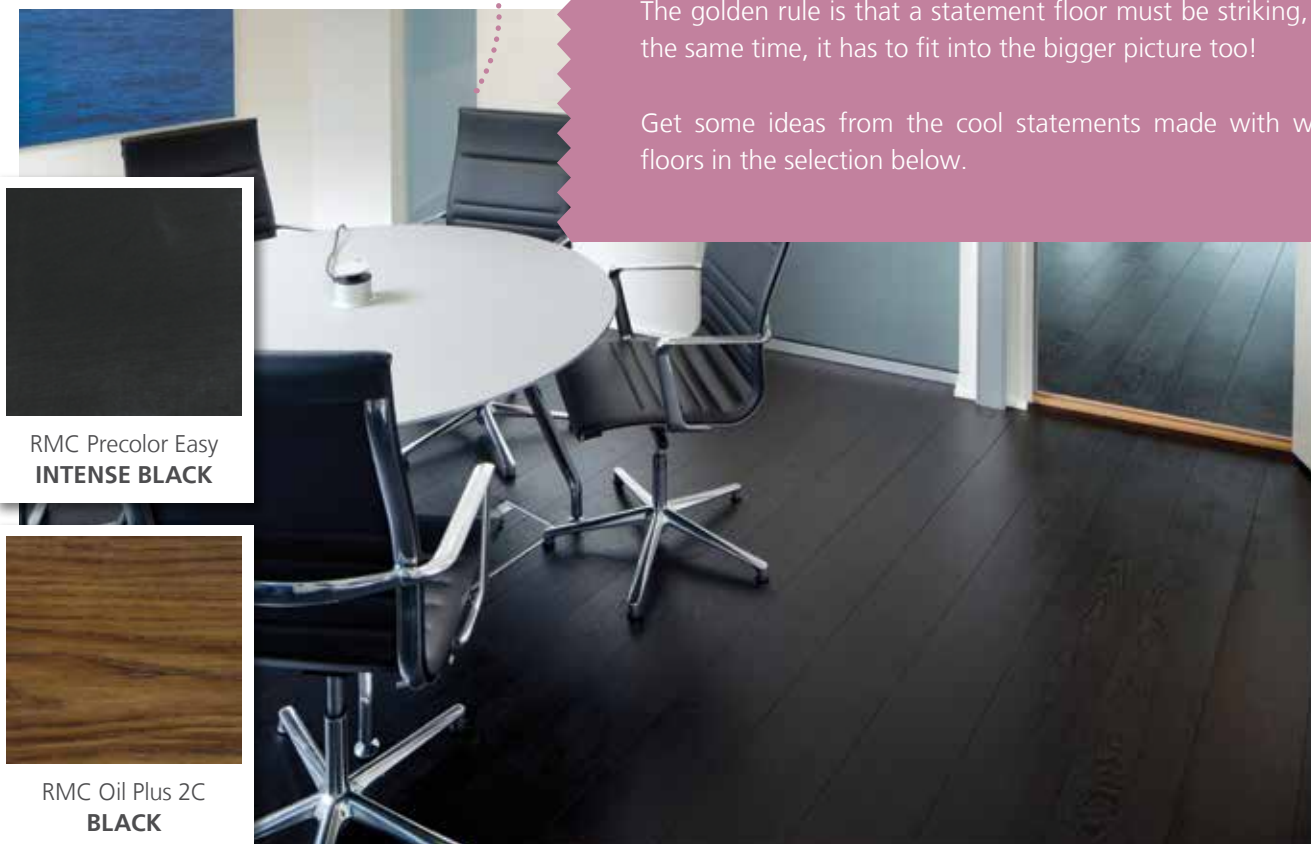
© 2018 Lenzer

Dark grey and brown shades, or even black, bring warmth into a room and add refinement to your floor.

STATEMENT PARQUET FLOORS

The difference between a statement floor and an everyday floor is the element of surprise. This may be an unexpected colour, a non-traditional laying pattern, a combination with other materials, etc. With a floor you can literally go any direction you want, from modest creative statements to statements for the daring at heart. The golden rule is that a statement floor must be striking, but at the same time, it has to fit into the bigger picture too!

Get some ideas from the cool statements made with wooden floors in the selection below.



RMC Precolor Easy
INTENSE BLACK

RMC Oil Plus 2C
BLACK

1. Rich, dark floors

Pale, Scandinavian floors; they are modern, stylish and always a safe choice. That makes them very popular, but maybe also not that surprising. Would you like to be more original? Take a look at the other end of the colour spectrum and go for a richer, darker colour. Dark grey and brown shades, or even black, bring warmth into a room and add refinement to your floor. Plus, a dark floor looks great in a sleek contemporary interior as well as in an eclectically inspired one.

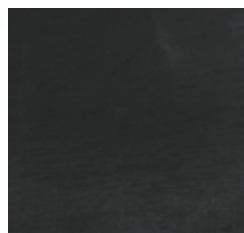
A dark colour without losing the natural look of the wood? That can be achieved perfectly with the Rubio Monocoat Oil Plus 2C in colours like Charcoal, Black, Chocolate, etc. Would you like a more distinct colour? Opt for a pretreatment with Rubio Monocoat Precolor or Easy. This optional pre-colouring, which is always

applied in combination with the Rubio Monocoat Oil Plus 2C finish, allows you to choose intense colours without disrespecting the natural look and feel of the wood. For example, combine RMC Precolor Easy Intense Black with a RMC Oil Plus 2C finish in the colour Black for an intensely black floor.

Do you enjoy some contrast?

The combination options of 14 colours of RMC Precolor or Easy and 40 colours of oil, creates unlimited creative possibilities. Why not a royal patina by combining the RMC Precolor Easy Intense Black with a finish of RMC Oil Plus 2C, in the colour Touch of Gold?

A combination of:



RMC Precolor Easy
INTENSE BLACK



RMC Oil Plus 2C
TOUCH OF GOLD

Colour Trends 2017

**The difference between
a statement floor and an everyday
floor is the element of surprise.**

2. Playing with patterns

When you think of parquet, you probably immediately picture a traditional plank floor. For this age-old but timeless pattern, the boards are neatly placed next to each other. The plank floor shines in its simplicity and is still the most frequently used laying pattern.

Would you like to turn your parquet into a real eye-catcher? Maybe a special laying pattern is something for you! A surprising, classic twist for a sleek interior with a herringbone parquet, an industrial vibe for a living room thanks to on-edge parquet or a vintage wink in a contemporary kitchen by using the hexagon pattern; the sky's the limit!

But we don't always have to look far. It's perfectly possible to make a statement with the familiar plank floor. By playing with the varying lengths and widths or different types of wood, your floor can look totally unique.

© 2018 Kristen Mayfield



© 2018 Kristen Mayfield

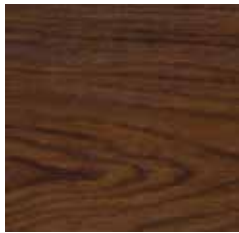
3. Combo floors

Often spotted these days and very refreshing: combo floors. For this trend, as the name suggests, different floor types and materials are combined with each other.

Of course, it has been customary in the past, for practical reasons, to combine a parquet floor with a tile floor, for example, in a kitchen. But the way it is done today leads to the most creative designs!



RMC Oil Plus 2C
PURE



RMC Oil Plus 2C
CHOCOLATE



Pre-smoked Oak wood
with RMC Oil Plus 2C
PURE



© 2018 UnSplash

Create
personalised and
unique effects with
**Rubio Monocoat
Precolor Easy!**



Optional pretreatment • Natural look & feel of the wood • 14 unique colours which can be mixed together • Unlimited creative options in combination with finishing coat of Rubio Monocoat oil • Non-reactive • 0% VOC

www.rubiomonocoat.com



Walnut wood with
RMC Oil Plus 2C **PURE**



STATEMENT WALLS, STAIRS, ETC.

Making a statement with a parquet floor is one option. But this trend can also be extended to other wood in our interior.

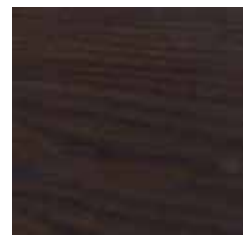
The term “**statement wall**” is familiar to us. Painting one wall in a bright or contrasting colour is a well-known technique to give a dull room some allure. But if we translate this technique to a wooden statement wall, we immediately get a unique effect. A wooden wall as statement is posh and naturally exudes warmth.

If you already have a beautiful wooden floor, you could extend it to the wall. But it goes without saying that you don't need to have a wooden floor

The opportunities to make a statement with wood in your interior are endless, as long as you stay true to your personality.



Geometric patterns
can also look incredible
as a statement wall.



RMC Oil Plus 2C
CHARCOAL

*A wooden wall
as statement is posh
and naturally
exudes warmth.*

to be able to make a wooden statement wall. A wooden wall also looks good in combination with tiles or a concrete floor. Even patterns can be done perfectly. The Chevron pattern is very popular here and a real eye-catcher! But geometric patterns can also look incredible as a statement wall.

A **staircase** is, from a practical point of view, an important part of the house. But because of that practical perspective, they are often hidden behind a wall, door or in the hall. A staircase, however, can be a statement in itself and can add a lot of dynamic to a room. A wooden design staircase can add great value to an interior. Think of the sublime floating wooden staircases, whether or not finished

in a dark colour, which can often be seen in sleek interiors. If you do wish to limit the presence of the staircase in your home, a **wooden wall** with some transparency could be an excellent option for you. It is a solution that is often used for dividing rooms.

The opportunities to make a statement with wood in your interior are endless, as long as you stay true to your personality. Are you adventurous? Then go for a daring statement like a black floor or a dynamic wooden staircase! Or do you prefer a modest statement? Then a natural statement wall is probably more your thing. **But stick to one single statement. You can have too much of a good thing!**

INTERVIEW WITH

Pieterjan Van Maele*About Pieterjan Van Maele*

- › graduated with distinction in 2009 as architect at the School for Science and Art Sint-Lucas in Ghent
- › owner of PVM Architects
- › freelance teacher at Syntra West & Midden-Vlaanderen, CEVORA and VIVO

The use of wood in interiors is totally hot again today. Why do you think this is a trend now? First, because of the link with nature. In addition to natural stone, wood is one of the most natural materials out there. Concrete, for example, consists of natural materials, but requires a process to turn it into concrete. Wood, however, comes straight from nature. Secondly and probably the main reason for the trend, is the natural look wood brings with it; particularly combined with other, cooler materials, it adds a lot of warmth and character to a room.

Why opt for wood? What are the pros and cons of using wood in an interior?

The greatest pro is actually my answer to the previous question: the warmth and character wood adds to a room. Today, there are practically no cons anymore. Thanks to the availability of quality wood-protection products, the use of wood is feasible for any project, even for bathrooms.





RMC Oil Plus 2C
CUSTOM MADE



Is wood a recurring element in your designs?

Yes, it is. Veneer wood often shows up in my designs, if the client's budget allows it. But there are also solutions for a tighter budget. For example, there is high-quality wood-textured laminate available today. The untrained eye won't be able to tell the difference.

In your project 'new home R – Roeselare' the dark finish of the custom wood is basically a common thread throughout the house. What is the idea behind this? The main idea in this project, which was extended through the interior and the exterior of the house, is the contrast between white and smooth versus dark and rough.

In the exterior, this is expressed in the use of a rustic concrete stone with a black top layer, combined with smooth, white stucco. When we step inside, there is

the dark, oil finish on the wood veneer cabinetwork, which was brushed in advance for extra texture. And the white cast floor and white high-pressure laminate cabinets provide the contrast.

The combination of the light, smooth floor with the dark, rougher wood is a real statement in this project. Is this something you often do in your designs? I like the contrasts white/black and smooth/rough, which certainly creates a link between my designs. But the contrasts don't always have to be so obvious. Depending on the client's wishes, it can also be done in more subtle ways, for example with the use of oak and natural stone.

Why did you opt for Rubio Monocoat to finish the cabinetwork in this project? The most important feature I look for when choosing a finishing product for wood, is the durability of the protection the product offers. I also want a product that results in a matt, natural look. Two requirements Rubio Monocoat meets perfectly. Plus, Rubio Monocoat had the colour I was looking for. I wanted it as dark as possible, but I felt black was too harsh for this project. Rubio Monocoat thus developed a warm custom-made colour for this project, which is somewhere between black and dark brown.

HINT OF Colour

Do you feel like something is missing in your interior, or could it use something extra? Give your wood a little strip of colour for a surprisingly big effect!

The use of colour in an interior has a bigger impact than we may assume. A colour brings dynamics into a space and also affects how we experience the space optically. Dark colours, for example, often add a kind of peacefulness and elegance and can make a room seem smaller. Very light colours create a fresh, open look and generally make a room seem bigger.

There are several ways in which we can introduce colour into a room. You can make a real statement with colour by colouring large surfaces or working with striking contrasts. Think of the dark or even black floors or walls we mentioned earlier, in the section 'Statement Wood'. But it can also be done more subtly with colour accents. Here are some ideas:

HINT OF COLOUR ON YOUR FLOOR

Do you have parquet with a pattern? You can accentuate a few boards by gi-

ving them a bright colour. A playful, creative and unique result is guaranteed! If you prefer something quieter, you can combine different neutral colours in one floor. With white and grey shades, you can successfully create a Scandinavian look with a wink.

HINT OF COLOUR ON YOUR WALL

Panelling lends itself perfectly to bringing colour into a room in a fun way. Extend the colour of your parquet into your panelling for fluid lines. Or, go for contrasting colours with the colour-blocking technique, for panelling that radiates boldness and playfulness!

HINT OF COLOUR ON YOUR FURNITURE & ACCESSORIES

Perhaps the easiest way to add a hint of colour to a room is with a piece of furniture or an accessory. For example, colour one piece of wooden furniture as an eye-catcher or extend an accent colour to several accessories for an attractive, recognizable rhythm in your interior.





A mix of:



RMC Hybrid Wood
Protector **PIGLET**

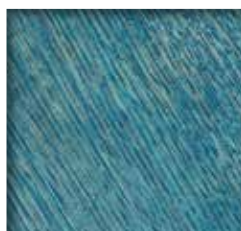


RMC Hybrid Wood
Protector **WHITE**

Colour one piece of wooden furniture as an eye-catcher or extend an accent colour to several accessories for an attractive, recognizable rhythm in your interior.



Colour Trends 2017



RMC Oil Plus 2C
VELVET GREEN

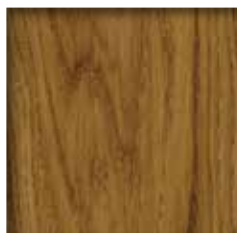
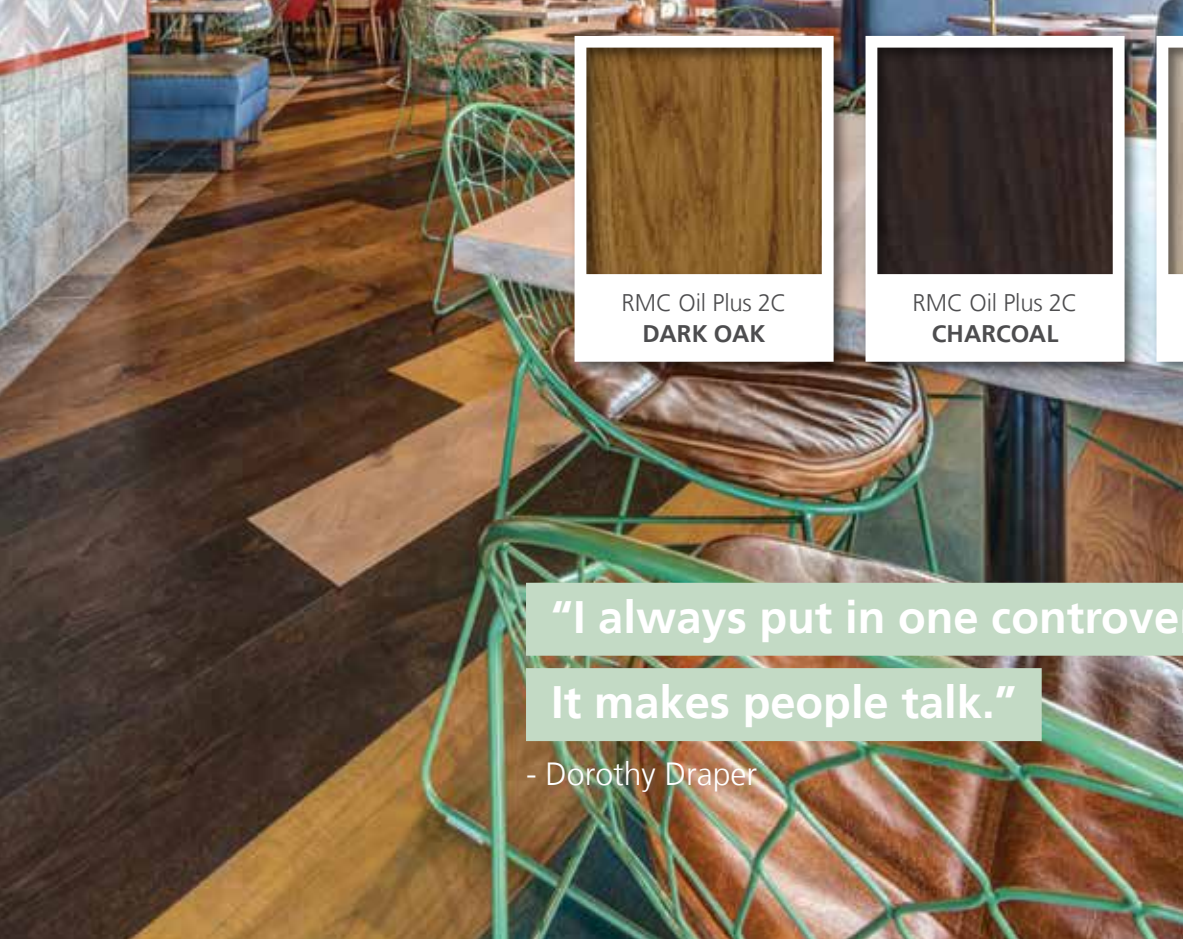


*Colour is our passion
and we are proud of that!
Our products and realisations are
the result of this.*

Opting for wood in your interior means opting for the warmth and charm of a noble, natural material. Adding a hint of colour to the wood can be nice, but you probably would not want to hide the wood under it. At Rubio Monocoat we absolutely share that opinion. **Our oil has been specifically designed to colour and protect the wood while maintaining its natural look & feel!**



RMC Hybrid Wood
Protector **VEGGIE**



RMC Oil Plus 2C
DARK OAK



RMC Oil Plus 2C
CHARCOAL



RMC Oil Plus 2C
COTTON WHITE

"I always put in one controversial item.

It makes people talk."

- Dorothy Draper

At Rubio Monocoat, everyone works with colour; from the R&D in Belgium to the Rubio dealers that pick colours with their customers worldwide. Colour is our passion and we are proud of that! Our products and realisations are the result of this. Our oil for interior applications, Rubio Monocoat Oil Plus

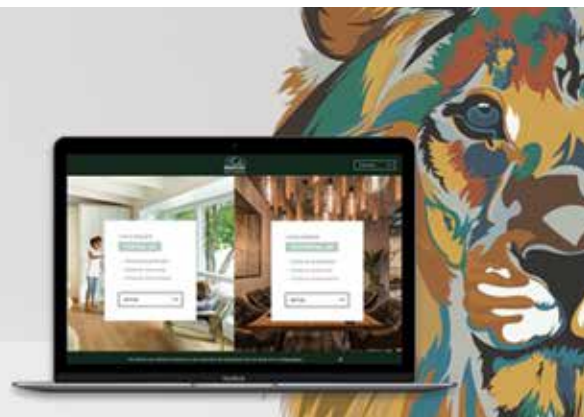
2C, for example, is available in as many as 40 standard colours, plus several trend colours to boot. In addition, the colours can also be mixed together, which results in an unlimited palette of colour options. For any hint of colour, no matter how big or small, Rubio Monocoat definitely has the right solution for you!



DO YOU ALSO FIND IT DIFFICULT TO CHOOSE THE RIGHT COLOURS FOR YOUR INTERIOR?

Turn this page and discover how our Rubio Monocoat colour configurator can help you with that!

*Want to find
the perfect colour
for your next project?*



A large selection of colours is great, but which colour is best for your project? **With our colour configurator, you can simply compare colours on different wood finishes and you can experience the result in real-life settings.** This not only makes it easy to select your favourite colour, but you also immediately get to see how that colour affects a space. By your request, your project can be saved so that you can look at it again and finalize it later.

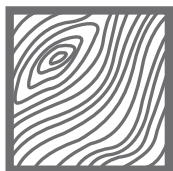
EXPERIMENT WITH COLOURS

There are a number of factors that determine how intense a colour will look on the wood. The unique tone and woodgrain of the wood type and the finish of the wood both play a big role in this. With the King of Colours tool, you can experiment with these factors until you have found the colour of your dreams.



Colour range

Compare all of our 40 standard colours.



Wood processings

See the impact of different wood processings on a chosen colour.



Real-life settings

Explore the result in real-life settings.

AN UNLIMITED COLOUR PALETTE

RMC Oil Plus 2C is available in 40 different colours, which also enrich the natural look and feel of wood. In addition to these standard colours, we also launch trend colour collections every year. These can also be mixed with each other, which provides an unlimited palette of options. And have we told you that one coat is enough to optimally colour and protect your wood? Very economical and sustainable indeed!

ABOUT KING OF COLOURS

In the last few years, Rubio Monocoat and King of Colours have often been mentioned in one breath. This is no coincidence, because the spirit of the mascot is woven into our identity. Boldness, loyalty and teamwork are qualities we share and aspire to. We also daily strive to continue being the market leader for oil colours.



www.rubiomonocoatkingofcolours.com

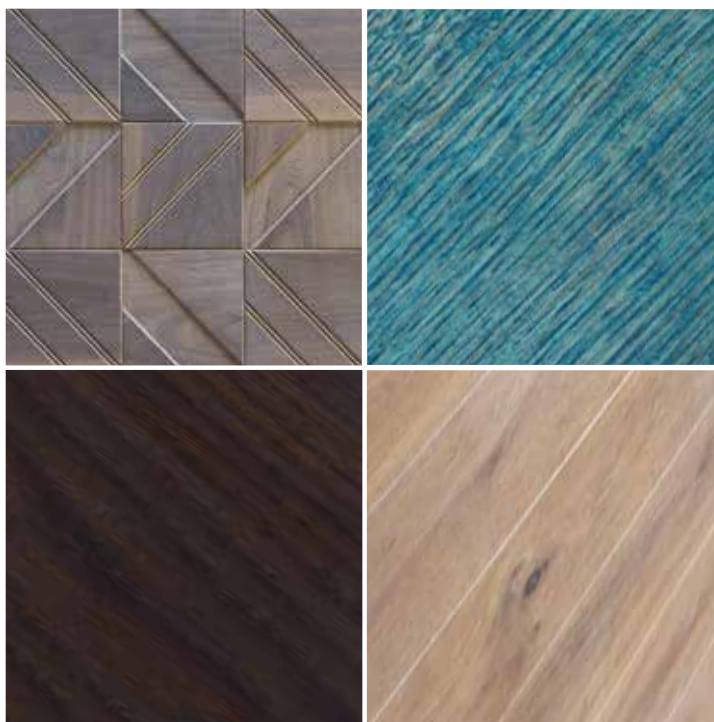


IN THE SPOTLIGHT

KING OF COLOURS TOOL

Rubio[®]
MONOCOAT
KING OF COLOURS

- 40 standard interior colours
- 13 trend colours
- based on our signature technology of molecular binding
- 0% VOC
- easy to apply and to maintain



MOTHER NATURE CREATED IT,
WE TREAT IT WITH LOVE

Rubio® Monocoat Headoffice
Roeselaarsestraat 535
8870 Izegem (Belgium)

⋮ +32 (0)51 30 80 54
⋮ info@rubimonocoat.com
⋮ www.rubimonocoat.com